



Cradle Kit SED

Malux Cradle Kit SED 2.0 is designed to easily upgrade existing TrainTalk models including OVK4 and Bury CarTalk to work with the new SED phones OPH-810R and OPS-810R. Malux Cradle kit SED can replace the Sagem/Sierra TIGR350R holder without rebuilding.

The new Cradle Kit SED 2.0 provides a 4 – 5 dB higher antenna signal than Sagem/Sierra TiGR350R Cradle and the insertion loss is only 1,5 – 2,5 dB, which provides a better coverage. Possibility to install Interference filter for blocking out public networks and still fulfil EIRENE SRS 16.0 – 3.2.5.



Upgrade to Cradle Kit 2.0 SED.



1. Remove the old TiGR350R holder and its bracket.



2. Undo antenna cable and D-sub connector.



3. Mount the bayonet bracket for the Cradle kit SED.



4. Connect the D-sub connector and the antenna cable.

Why TrainTalk™?

- Cost efficiency
- Reliable communication through GSM-R.
- Ease of installation in railway engines.
- Ease of use and install throughout the railway area, also in other vehicles and in earlier generation railway engines.
- Flexible – via the wide range of TrainTalk™ sets.
- Convenience with the OPH-810R and OPS-810R cradle (other cradles available on request).
- High quality, with components meeting high industry standards.
- Maintenance-friendly.
- Compliant with the EN 50121-4 / EN 50121-2-3, EN 50155 and EN 45545-2 standards

Three decades of devotion to security

Malux Finland Oy was founded in 1979 and has its office on its own premises in Porvoo, 50 km east of Helsinki. With two offices in Finland and three sales offices in the Baltic states, Malux serves the chemical and process industry with electrical devices for explosion-hazard areas and communication equipment for harsh environments.

Malux also specialises in vandal-resistant lights, under-water and outdoor lighting and emergency lighting. Malux Finland is a part of the Swedish Malux Group.

Malux Finland Oy delivered its first TrainTalk™ 2W system to the Finnish railway operator (VR) in 2009–2010. Since 2010 TrainTalk™ devices has been delivered around the world.

Malux
solutions

Malux Finland Oy
Phone +358 19 574 5700
www.malux.fi

Malux Sweden AB
Phone +46 660 29 29 00
www.malux.se

www.traintalk.com

New Cradle!

Communication for a reliable railway



Reliable rail communication is not only important, but vital.

Malux
solutions

Malux TrainTalk™

The TrainTalk™ system sets a new standard for reliable railway communication. This cost-efficient 2W system, instead of 8W, offers quick and flexible installation for engines and other vehicles throughout the railway area.

The TrainTalk™ system is designed for easy installations in existing or new engine fleets. The wide range of equipment options combines with fast and cost-efficient implementation to ensure flexibility in railway communication. The TrainTalk™ system is designed in accordance with the EN 50121-2-3-4, EN 50155 and EN 45545-2 standards.



Choose between complete units or individual modules

The TrainTalk™ kit has a modular design, which enables the system to be optimally installed in a variety of railway cabs of different generations, as well as in maintenance vehicles in the railway area.

The installation of the system is flexible; all components can be installed separately as free-standing units, or it can be modified for enclosure installation and rack enclosures as well.

Use Malux TrainTalk™ or Cradle Kit 2.0 in control centers, vehicles like cars, trucks etc.



Reliable rail communication is not only important, but vital. Safe communication between trains, train crew and traffic management is crucial to keep traffic flowing efficiently.



Plug & talk... and walk!

Malux Traintalk™ has been designed from the ground up to enable efficient, safe communication. Using the SED OPH-/OPS-810R mobile handset the operator is able to move throughout the train without having to transfer the call through a separate device. TrainTalk™ – as simple to install as it is to use – just plug & talk... and walk!

TrainTalk™ modules

Cradle Kit 2.0 for TrainTalk and CH2000 charger

Specially developed holder for GSM-R telephone SED OPH/OPS-810R with inductive transmission of antenna signal that allows external antenna to be connected. Extremely low loss of 1.5 – 2.5 dB which allows you to connect filters against interference from public networks between antenna and Cradle Kit and meet the requirements of EIRENE SRS 16.0 – 3.2.5. Approved according to EN50155, EN50121-3-2 and EN45545.

Complete with interface card for upgrade from Sagem TiGR350R to SED OPH/OPS-810R in all Malux TrainTalk and Bury system. Connection with D-Sub to TrainTalk or Bury and TNC/f for external antenna.

CH2000 charger for fixed installations in trains

Compliant with the standards:
EN 50121-2-3-4 (2006)
EN 50155
Power supply 12VDC/24VDC. Dimensions: 105 x 125 x 30 mm.

We recommend CH2000 for safety reasons.

Cradle Kit 2.0 only for USB charging

With original charging cable mounted for USB charging and external antenna TNC/f.

Cradle holder SED

Made for robust easy fixing of an SED OPH/OPS-810R when you only need a fixed place and charging via USB. Can be mounted directly on a wall or swivel fixing bracket.

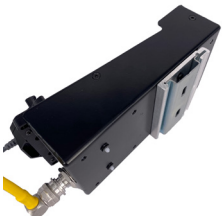
Example of standard USB chargers

230 VAC or 12/24 VDC.



Mounting accessories

Building your own unique solution based on your own requirements is easier than ever. Malux adjustable pedestal mounts allow you to pick and choose individual parts to create the exact solution needed. The teeth within the interlocking joints provide a very strong mount in all configurations.



DIN



Swivel



Pedestal