

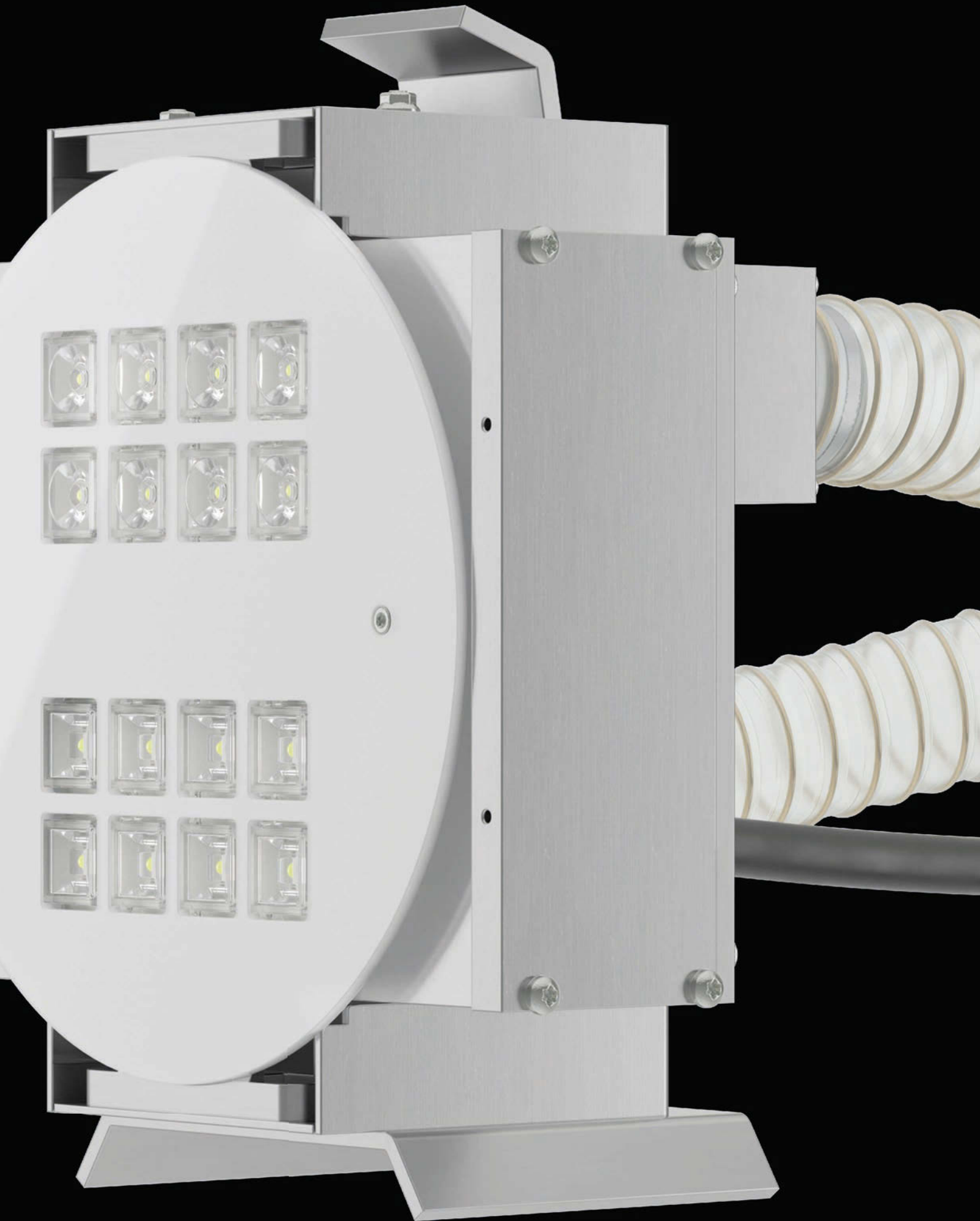
Retrofit-Insert for 4.1900

4.1913

The powerful LED insert for the replacement of existing sports pool spotlights (size 4.1900) with operation from the pool perimeter or the back of the pool increases the safety of swimmers and minimises maintenance and energy costs. Compared to outmoded 150-watt metal vapour lamps, it consumes only 62 watts and the frequent time-consuming replacement of lamps is no longer necessary. The light, which is directed forwards without loss, illuminates the water particularly clearly and intensively.



1:1 SCALE



4.1913 | Retrofit-Insert for 4.1900

Up to 9300 lumen – Sustainable replacement for 150 Watt HIT

- Retrofit insertion for installation in existing spotlights 4.1900
- For retrofitting halogen to LED
- Entirely made of high-quality anodised aluminium
- ...
- POW-LED cold white, warm white, neutral white
- Multichip POW-LED RGB-W
- Operating mode mono: constant voltage
- Operating mode RGB-W: constant current
- Temperature controlled (onboard)
- Surge protection
- Light distribution especially for swimming pool lighting
„asymmetric Mixflux“
- ...
- Delivered ready for connection
- Incl. end cover with integrated access port
for easy installation
- Constant-voltage power source/RGB-W controller
ordered separately
- Supplied with 2 m of special underwater cable



© THERMEN & BADEWELT SINSHEIM, Germany



© Hallenbad Biel-Bienne, Switzerland
Photo: Tridea Grafik Fotografie Webdesign Nidau Biel-Bienne

Typical applications

This retrofit insert is intended for existing 4.1900 type spotlights, which are primarily installed in sports pools. The insert has everything for a hassle-free change to LED. Better lighting power, considerably less consumption, long service life, safety and sophisticated temperature management. The latter is important in order to put the spotlight back into operation in accordance with regulations, namely as a closed unit with a cover plate.

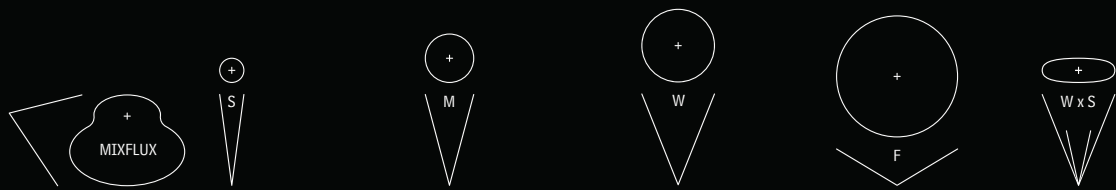
Colour temperatures



STANDARD

6000K cold white 4500K neutral white 3000K warm white RGB-6000K + cold white RGB-4500K + neutral white RGB-3000K + warm white

Beam angles



STANDARD

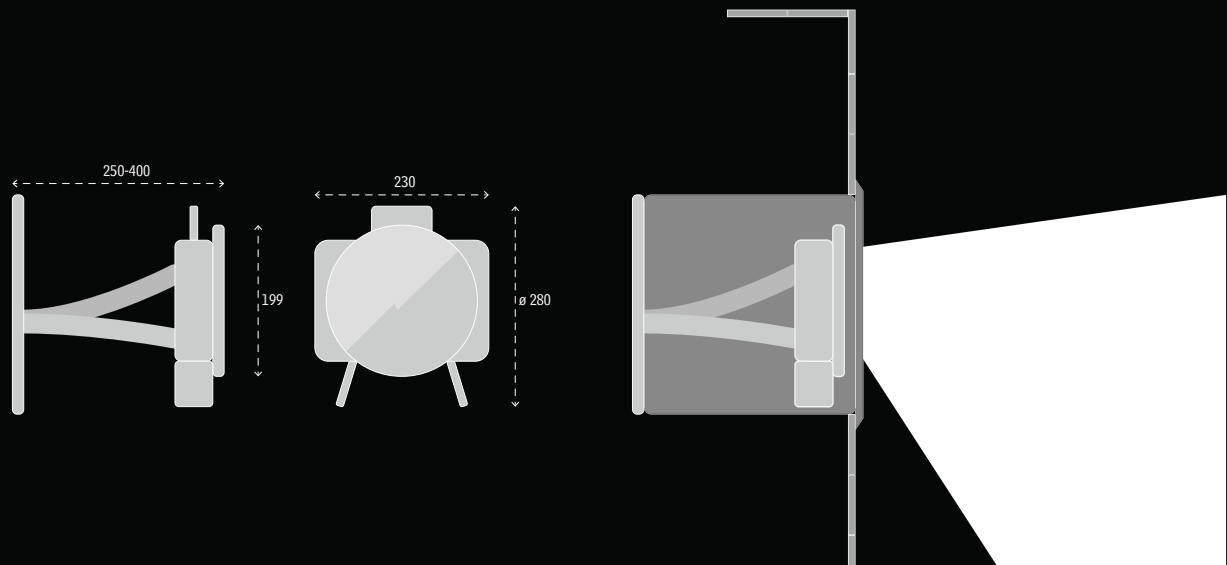
OPTIONS

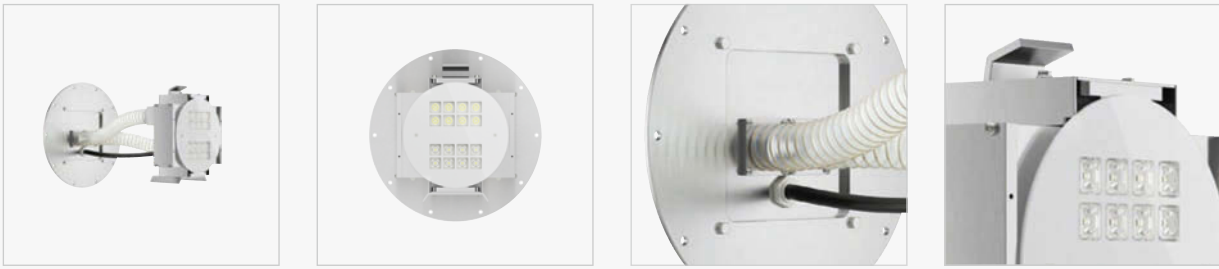
mixflux asymmetric spot 10° symmetrical medium 25° symmetrical wide 50° symmetrical flood ~120° symmetrical wide x spot 50x15° elliptical

Notes

- Replacement/exchange requires separate agreements.
- Dimmable power supply units on request

Dimensions





Underwater environments only

Monochrome illumination

#	Color	Lumen
4.1913.00.11	6000K cold white	9300 lm
4.1913.00.12	3000K warm white	7520 lm
4.1913.00.13	4500K neutral white	8040 lm

Specifications	
LED	16 POW-LED
WATT	total 62 W
POWER	CV 12 V-DC
BEAM	asymmetric Mixflux
CABLE	UW, 5x1,5 qmm

Control gear	Details
5.0630.20.16 max 1	→ 210

Dynamic illumination

#	Color	Lumen
4.1913.00.41	RGB-CW cold white 6000K	cold white: 2320 lm
4.1913.00.42	RGB-WW warm white 3000K	warm white: 1880 lm
4.1913.00.43	RGB-NW neutral white 4500K	neutral white: 2010 lm

Specifications	
LED	16 Multichip POW-LED
WATT	all on 76 W
POWER	CC 12 V-DC
BEAM	asymmetric Mixflux
CABLE	UW, 25x0,5 qmm

Control gear	Details
5.0670.39.52 max 1	→ 216