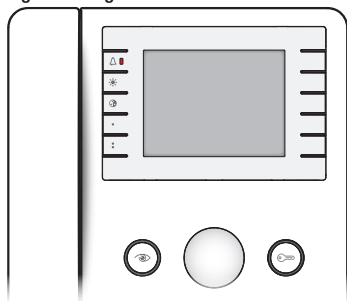
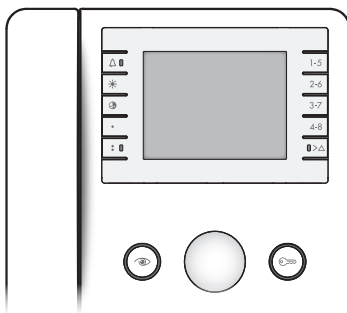


INTERNAL VIDEO
RECEIVER

Agata V – Agata VC



Agata VC/B – Agata VC/B-L



USER MANUAL


AGATA V - AGATA VC
AGATA VC/B - AGATA VC/B-L


FB00080-EN


CE

FC


Function of buttons

	Press repeatedly to adjust the ringtone volume: low, medium, high, off (red LED on).
--	--


	Press repeatedly to adjust the screen brightness. This function is available when video is activated.
--	---


	For devices with black and white LCD, press repeatedly to adjust the contrast. For devices with colour LCD, press repeatedly to adjust the screen colour saturation. This function is available when video is activated.
--	---


<ul style="list-style-type: none">•	Auxiliary 1 Active also when there is no communication if the system permits it.
---	--

	Auxiliary 2 / Concierge call (green LED).
--	---

1-8	Intercom buttons 1-8
-----	----------------------

 > △	Pressing for < 2 seconds (red flashing LED) activates intercom calls from 5 to 8. Pressing for > 2 seconds (red LED on) sends a panic signal to the concierge desk (where present).
---	--

	Activates and selects the entry panel (blue LED). This function is available only when the line is free.
--	--

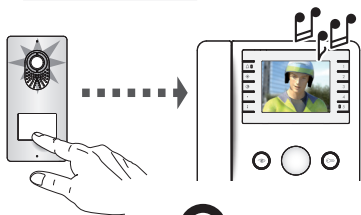
	Door lock release (blue LED). During a call from an entry panel or self-connection, the permanently lit LED indicates that the door is open (the system must be set up as necessary to generate this signal).
--	--

Only use soft, dry or slightly damp cloths to clean; do not use any chemical products.

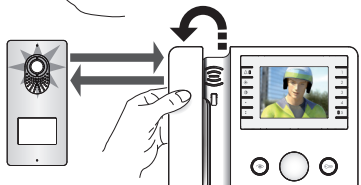
This device complies with Part 15 of the FCC Rules. Operation is subject to the following two conditions:

- (1) this device may not cause harmful interference and
- (2) this device must accept any interference received, including interference that may cause undesired operation.

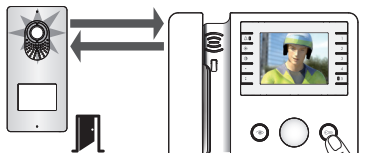
Standard functions



Call in progress.

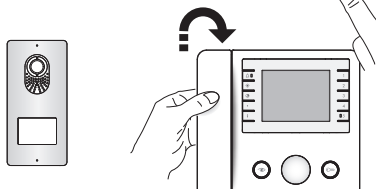


Answering a call.



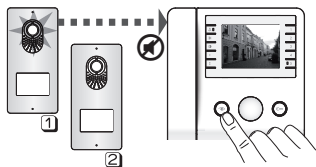
Communication activated.


Entry panel door lock release.

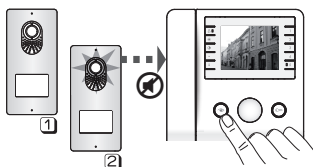



Ending the communication

Self-connection

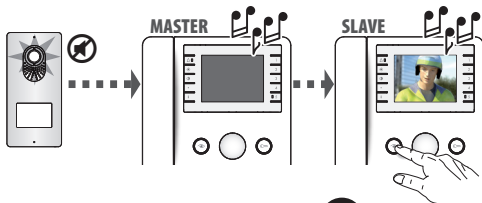
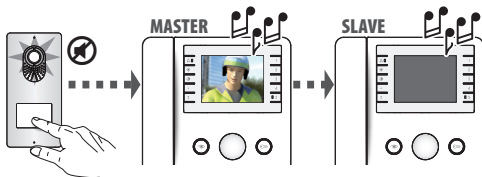


Press the  key to activate video communication with the entry panel.




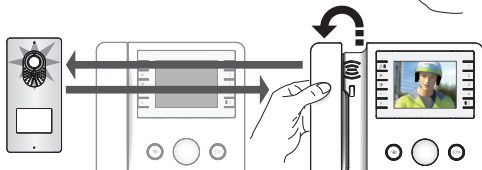
Where there is more than one entry panel, press the  key multiple times to show all the panels in succession.

Video toggle



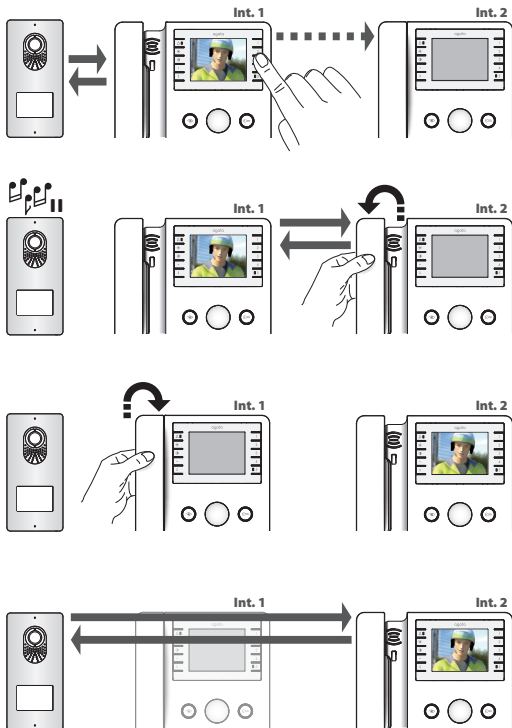
For simultaneous video calls on multiple receivers, all receivers will ring but video will be activated only on the MASTER receivers.

Viewing can be transferred to a SLAVE receiver by pressing the  key.



For audio communication with the entry panel, pick up the handset.

Call transfer (Agata VC/B - Agata VC/B-L only)



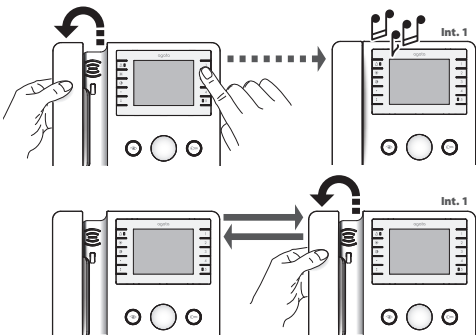
With a call active, select the internal receiver to which the call is to be transferred.

As soon as the internal receiver which has been called picks up the handset, the call is active between the two receivers; the entry panel remains on hold.

To connect internal receiver 2 with the entry panel, internal receiver 1 must replace the handset.

The internal receiver receiving the call can retransfer it.

Intercom (Agata VC/B - Agata VC/B-L only)



To call an internal receiver, pick up the handset and press the button for the receiver you want.

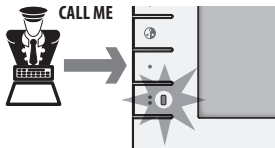
During a conversation between internal receivers, a call from an entry panel is signalled to the receivers with a beep that is repeated every 5”.

3 successive beeps indicate that it is not possible to make calls because the line is busy.

Concierge desk functions (Agata VC/B - Agata VC/B-L only)

The functions described in this chapter are only available in systems equipped with a concierge desk.

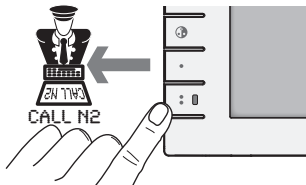
Call from concierge notification



When the Aux2 \odot LED is on, this indicates that the concierge wants to be called back.

The LED turns off when communication with the concierge begins.

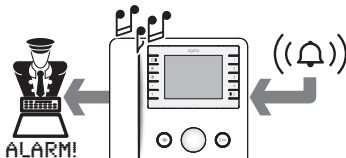
Panic button function



Press the \triangle button for at least 2 seconds; the receiver beeps and the red LED turns on to confirm that the panic signal has been sent to the concierge, together with the caller's number. The receiver LED stays on until the concierge calls the user back.

The panic signal takes priority over all calls.

Alarm signal



When an alarm contact connected to the relevant receiver input is activated, this sends a signal to the concierge and the receiver beeps intermittently for approximately 10 seconds.

Decommissioning and disposal. Dispose of the packaging material and the device at the end of its life cycle responsibly, in compliance with the laws in force in the country where the product is used. The recyclable components are marked with a symbol and the material's ID marker.

THESE INSTRUCTIONS MUST BE ATTACHED TO THE DEVICE; THE DATA AND INFORMATION ARE TO BE CONSIDERED AS SUBJECT TO CHANGE AT ANY TIME AND WITHOUT THE NEED FOR ANY ADVANCE WARNING.

CAME
safety & comfort



Came S.p.A.

Via Martiri Della Libertà, 15
31030 **Dosson di Casier**
Treviso - Italy

📞 (+39) 0422 4940

📠 (+39) 0422 4941

Via Comia, 1/b - 1/c
33079 **Sesto al Reghena**
Pordenone - Italy

📞 (+39) 0434 698111

📠 (+39) 0434 698434

www.came.com