



Malux GSM-R TrainTalk™
for reliable railway communication





TrainTalk™ GSM-R

The TrainTalk™ system sets a new standard for reliable railway communication. This cost-efficient 2W system, instead of 8W, offers quick and flexible installation for engines and other vehicles throughout the railway area. It is designed for easy installations in existing or new engine fleets.

The wide range of equipment options combines with fast and cost-efficient implementation to ensure flexibility in railway communication.

The TrainTalk system is designed in accordance with the EN 50121-3-2 (2006) and EN 50121-4 (2006) standards.



GSM-R handsets

While originally designed for Sagem TIGR 350/550R GSM-R phones, the TrainTalk system can also be modified for other type of hand helds (TETRA etc).

Other cradles are available on demand.



Plug and talk!

Malux Finland Oy specialises in communication equipment and solutions for harsh environments.

The foundations of Malux Finland's success are formed of top-notch ability to serve customers and find long-lasting and smart solutions. We have applied the Malux innovative spirit, in development of the new TrainTalk™ communication systems for railway area use. It was an important design goal that the new communication set for railways be as simple to install as it is to use – just plug in and talk!

■ Versatile kits for easy installation!

If the TrainTalk™ enclosure does not suit the application in its original state, components such as phone or cradle, volume control, PTT-button and handset can be installed separately as free-standing units, making TrainTalk installation very flexible.

Functions available via GSM-R handset can easily be adapted to the TrainTalk unit.



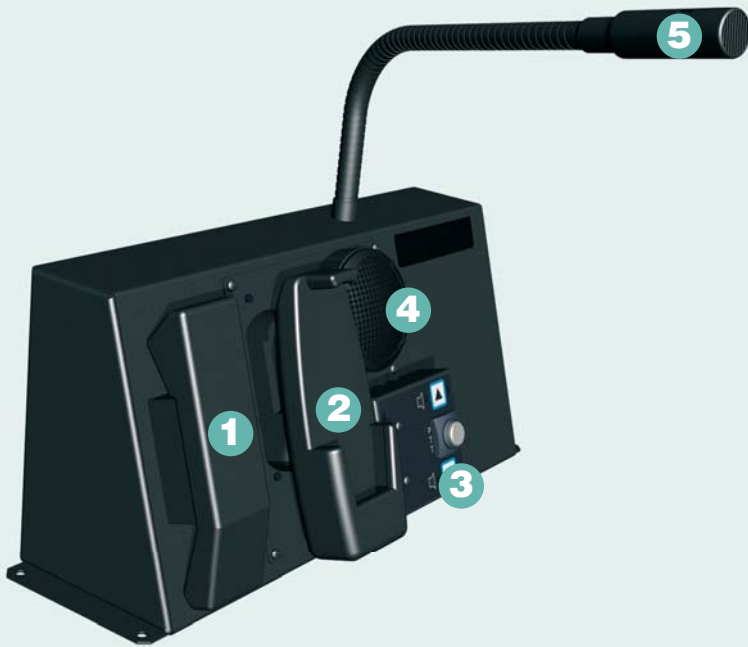
Malux



ISO 9001

TrainTalk™ benefits

- *Cost-efficient*
- *Reliable in communication over the GSM-R network.*
- *Easy to install for railway engines.*
- *Easy to use and install throughout the railway area, also in other vehicles and in earlier generation railway engines.*
- *Flexible – via the wide range of TrainTalk sets.*
- *Convenience with the Sagem TiGR 350/550R cradle (other cradles on request).*
- *High quality, with components meeting higher industry standards.*
- *Maintenance-friendly.*
- *Compliant with the EN 50121-3-2 (2006) and EN 50121-4 (2006) standards*



TrainTalk™

Units:

- 1. Handset
- 2. Cradle for GSM-R phone
- 3. PTT-unit
- 4. Loudspeaker
- 5. Microphone

Complete unit or separately installed kits?

The TrainTalk™ kit has a modular design, which enables the system to be optimally installed in a variety of railway cabs, of different generations, as well as in maintenance vehicles in the railway area.

The installation of the system is flexible; all components can be installed separately as free-standing units, or it can be modified for enclosure installation and rack enclosures as well.



The CU-unit





Examples of 2W TrainTalk™ kits



Type	Code	Description
TM 2002	20102002	Dashboard / modulare installation Supply voltage 24VDC Including CU-unit, base plate, cradle, loudspeaker, handset, microphone, PTT button and volume control, 0.6 m antenna cable with N-connector, installation brackets



Type	Code	Description
SR 2004	20102004	Installation with enclosure Supply voltage 24VDC Including CU-unit, base plate, cradle, loudspeaker, handset, microphone, PTT button and volume control, 0.6 m antenna cable with N-connector

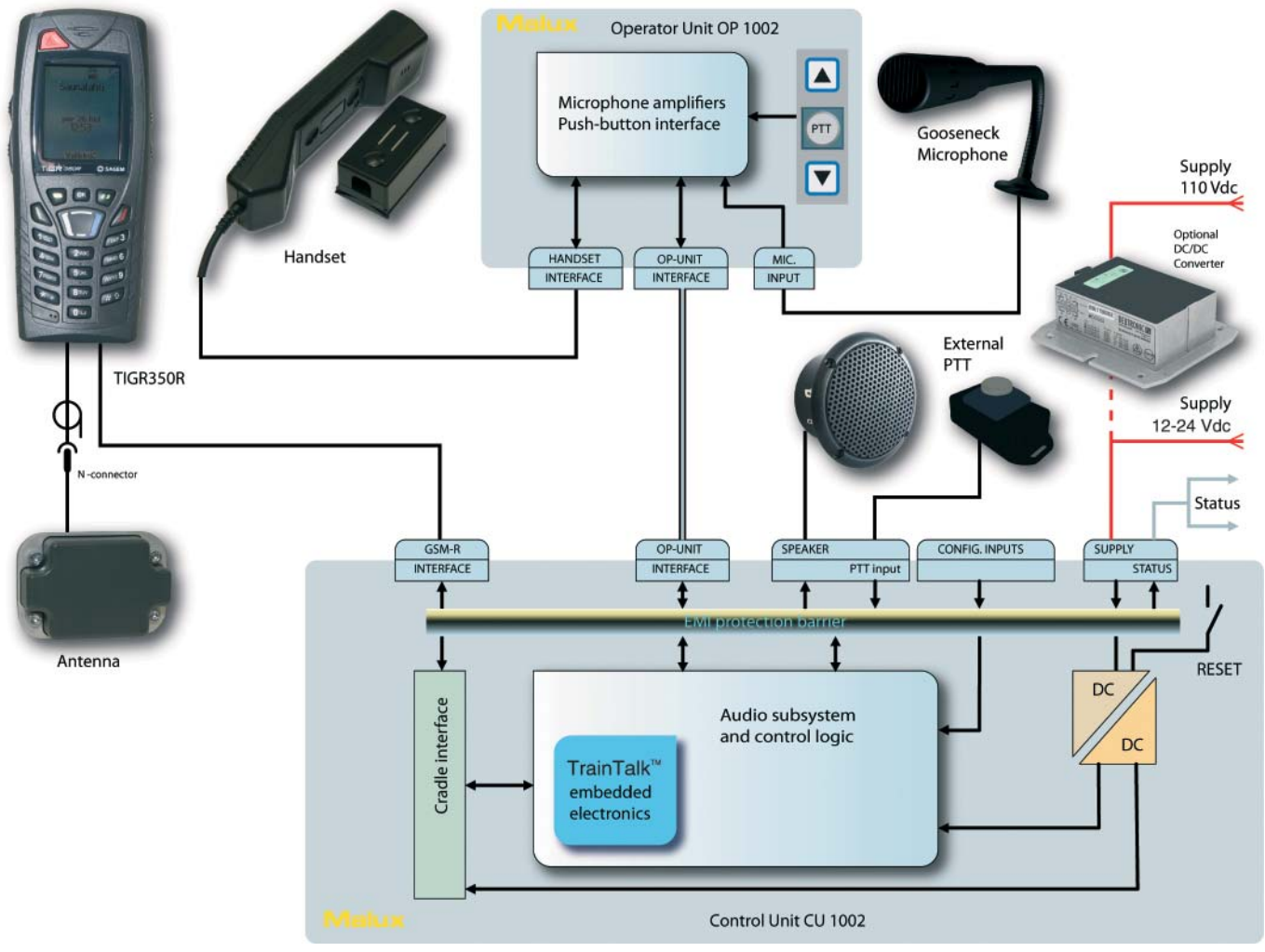


Type	Code	Description
RM 2006	20102006	Rack installation Supply voltage 24VDC Including CU-unit, base plate, cradle, loudspeaker, handset, microphone, PTT button and volume control, 0.6 m antenna cable with N-connector



Type	Code	Description
TS 2008	20102008	Training unit, portable Supply voltage 230VAC/24VDC Transformer 230V/24VDC Including CU-unit, base plate, cradle, loudspeaker, handset, microphone, PTT button and volume control, 0.6 m antenna cable with N-connector

Block diagram



Call Forwarding and charger for GSM-R

Charger and call forwarding mixed in the same device is an excellent description of our latest invention.

The new **CH2000** is a reliable way of forwarding calls between cradle and handheld. When the cabin radio recognizes a new handheld in the cradle, the cradle automatically sends the phone number to the 8W cab radio system.

The phone number is saved in the cab radio memory as long as the handheld is in use with this specific cradle.

When the handheld is in portable use and detached from the cradle, the phone number is forwarded to the handheld and stays in memory even outside the cabin area! This unique call forwarding feature gives more flexibility in daily use, but is of great help in emergency situations outside the cabin area. The **CH2000** together with the cabin radio system constantly check the active handheld to avoid that phone numbers get mixed, for example when the staff in the cabin shifts. We recommend **CH2000** for safety reasons!



CH2000 and cradle



2 Hello!
I'm new here and
my number is 555.

3 It's 555... if he
leaves the cabin
I let you know!



1 Hi, I recognize a new
GSM-R phone in the cradle.
What's the number?

4 Thank you, I save
the number!



Maluxkoncernen grundades i början av 1970-talet och har sitt huvudkontor i Örnsköldsvik.

Produktprogrammet består av säkerhetsprodukter inom belysning, el, kommunikation och data. Vi har verksamhet i Sverige, Finland, Estland och Litauen. Vårt sortiment varierar något beroende på marknad.

Våra kunder finns i huvudsak inom kemi-, läkemedels- och processindustri, fordonstillverkning, byggindustri, installationsbranschen och offentliga sektorn. Vi samarbetar även med de större grossisterna.

Koncernens motto är "I säkra händer med Malux".



Malux 

Order: 0660-29 29 00 • fax: 0660-850 85 • www.malux.se

Huvudkontor och lager

Malux Sweden AB, Box 221, 891 25 Örnsköldsvik
Telefon: 0660 - 29 29 00, Fax 0660 - 850 85

Försäljningskontor

Stockholm: Box 42144, 126 15 Stockholm. Fax 08-645 92 02

Göteborg: Energigatan 17 G, 434 37 Kungsbacka

Stenungsund: Munkerödsvägen 4A, 444 32 Stenungsund

Kalmar: Norra Vägen 18, 392 34 Kalmar

Övriga bolag i koncernen:

Malux AB • Malux Data AB • Malux Finland Oy • Malux East Ltd • Accenta AB