

Technical solutions for a safer world



Industrial



Ex/Atex



Real Estate



Infrastructure



Vehicle



Train



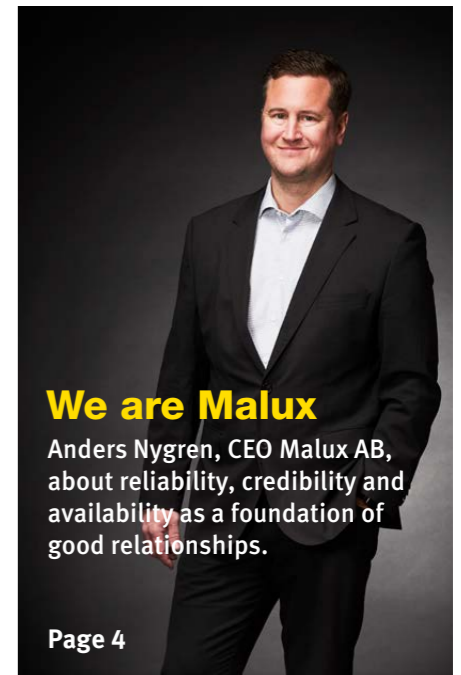
Malux is an entrepreneurial company with its headquarters in Örnsköldsvik, the heart of the High Coast area in Sweden. With great knowledge, quick deliveries and reliability, we create added value for our customers and partners.



Service and aftermarket

With Malux Service Agreement you will be safe knowing that all inspections and checks are documented correctly. Malux is the easiest way to a hassle-free life.

Page 12



We are Malux

Anders Nygren, CEO Malux AB, about reliability, credibility and availability as a foundation of good relationships.

Page 4

Safety is a full time job for Malux

Jörgen Schulze owner of the Malux Group: "Customers are Malux most important colleagues"



Page 15



Our history

Page 14



Our various business areas

Lighting page 6-7
Industrial/Ex page 8-9
Communication page 10-11

Accenta is shining brighter than ever, as a part of Malux

In 2008, Accenta became a part of the Malux Group and after many years of close collaboration, we are now working together with the ambition to be the best emergency lighting company.

We now offer a wider and better product range and more complete solutions. We have experience, competence and commitment that will make a difference.



TrainTalk™ makes life easier on the railway

Malux has developed the TrainTalk™ system in collaboration with Nordic train operators. A flexible system that makes life easier for both train drivers and staff by using portable GSM-R phones that work both outside and inside the trains.

With its modular design and shared installation, flexibility is available.





We are **Malux**

Stronger together! A nordic salesforce with global solutions

Malux Sweden AB
Malux Finland Oy
Malux East Ltd



"Our ambition is to be the most trustworthy company in the business"



Anders Nygren, CEO Malux AB

Since the company started, close to 50 years ago, we have focused on creating a safe working environment for our customers. Our motto is "in safe hands with Malux" and all customers should feel that we are responsible, committed and pleasant to work with. Malux is established in Sweden, Finland, Estonia, Latvia and Lithuania with clients in Europe, Middle East, Asia and Australia. To be successful, we have more than 100 employees working to be

reliable, trustworthy and available towards our customers. I have been with the company for almost 20 years and we have always adapted to how the world is changing. We work with safety related solutions that are customized to the customers need as well as maintenance and service to ensure product function over time. Delivering technical solutions for a safer world, that is what encourage us everyday.

Collaborations and quality

Light for safety and comfort

Since 1972, Malux has delivered light to the darkness from north to south with the right touch for the place in question, always safe and reliable. With care for the end result and proactive approach, we deliver the safety and efficiency that ultimately creates a pleasant environment for everyone who works and moves in public areas.

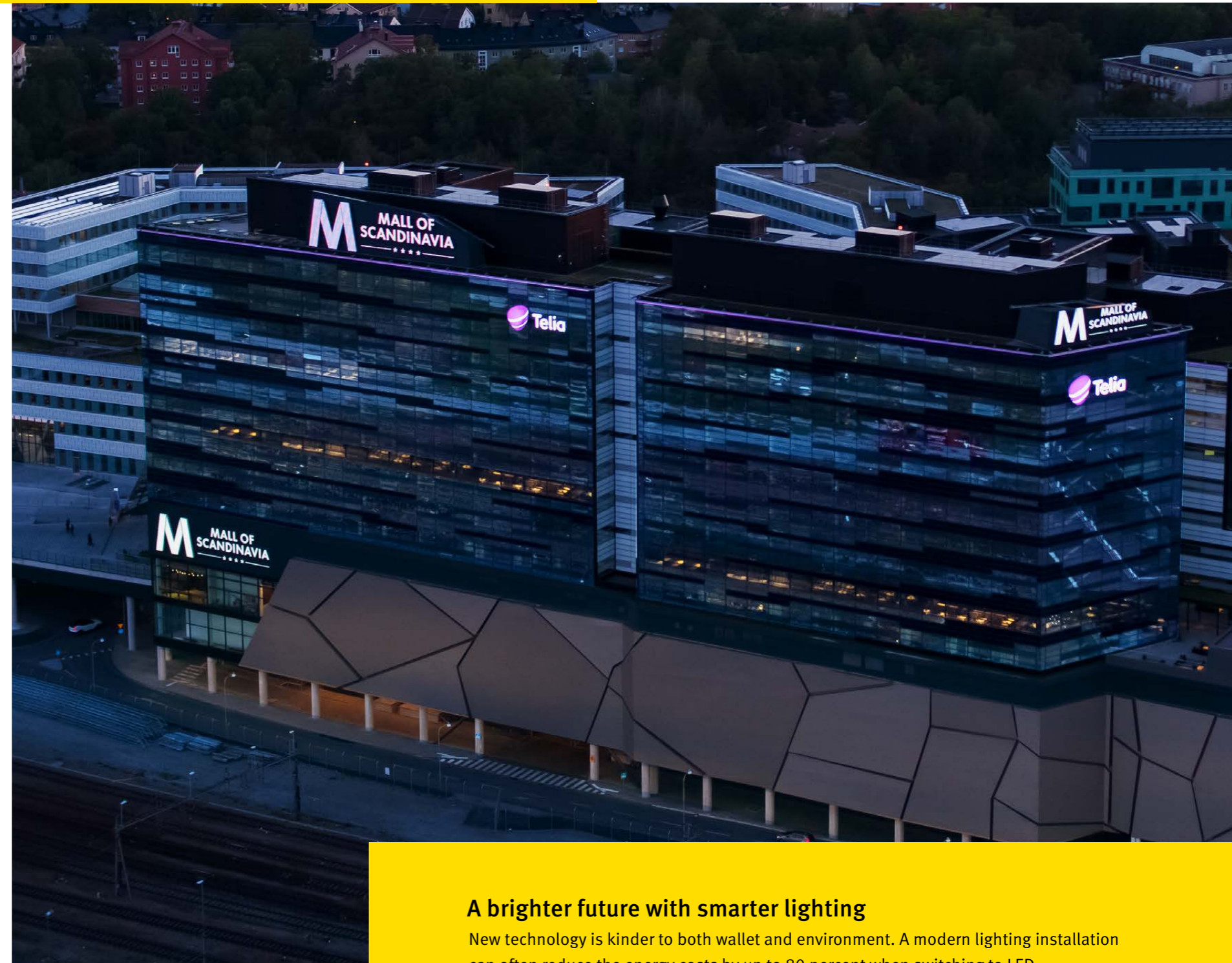
We believe that good illumination is important. Regardless of how many quotations and light calculations that are done, light is basically simple math. Everybody needs good lighting for safety and comfort.

Safe access control solutions for real estate

With the market's latest solutions for entry phones and access control systems, it's easy to let authorized persons in and keep others out. Easy to install, easy to maintain.

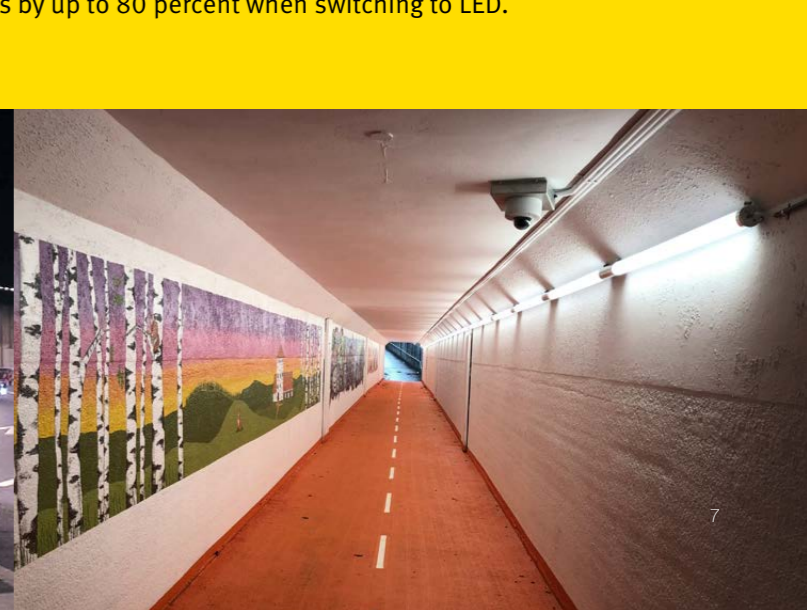
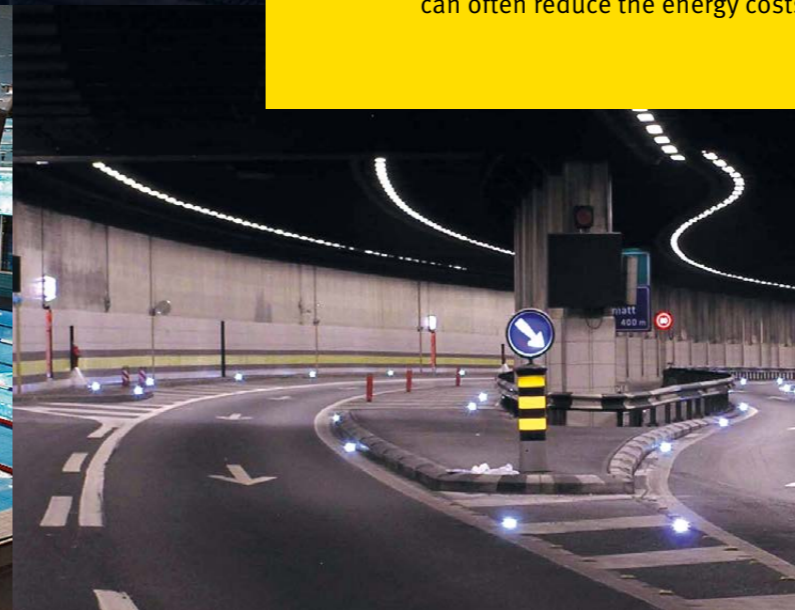
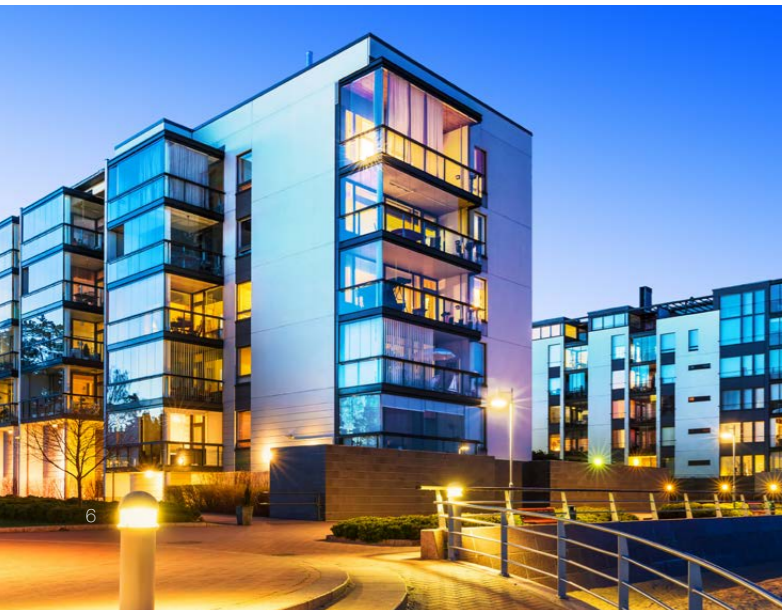
Our customers are in the following fields:

- Real estate
- Industry
- Commercial facilities
- Public facilities
- Infrastructure



A brighter future with smarter lighting

New technology is kinder to both wallet and environment. A modern lighting installation can often reduce the energy costs by up to 80 percent when switching to LED.



The right solution in the right place

There are no shortcuts on the way towards a safer working environment, the tradeoffs are too many. Malux, with a Nordic salesforce which cares for every individual delivery, has for almost fifty years gained knowledge and expertise. We will help you navigate amongst our products, solutions and demands from the authorities at all levels.

Our goal is to make everyday life both safer and more efficient for everyone who works in an industrial environment. We have one of the market's widest product range and most important of all, the expertise with experience required to deliver the right solution to the right place.

In an ever-changing industrial environment we deliver insights, services and products that makes a difference.

Our customers are in the following fields:

- Oil and gas industry
- Chemical industry
- Boat and shipbuilding industry
- Pharmaceutical industry
- Machinery industry
- Food industry
- Petrochemical industry
- Other industries



Long-life solutions

The cost of purchasing a product is often negligible in terms of the total cost of ownership. With experience comes insight and understanding of what it takes to maintain a solution over time. We can assist you with finding the right solution, not just for here and now, but for the long term.



Communication that reaches all the way

Communication has always been something fundamental, but never before has it been so present. Everything from your mobile phone to the tachograph in the bus is constantly connected today. It's rather the absence of communication that draws immediate attention. When the web page is not loading -the API call remains unanswered -suddenly the daily life becomes much more complicated.

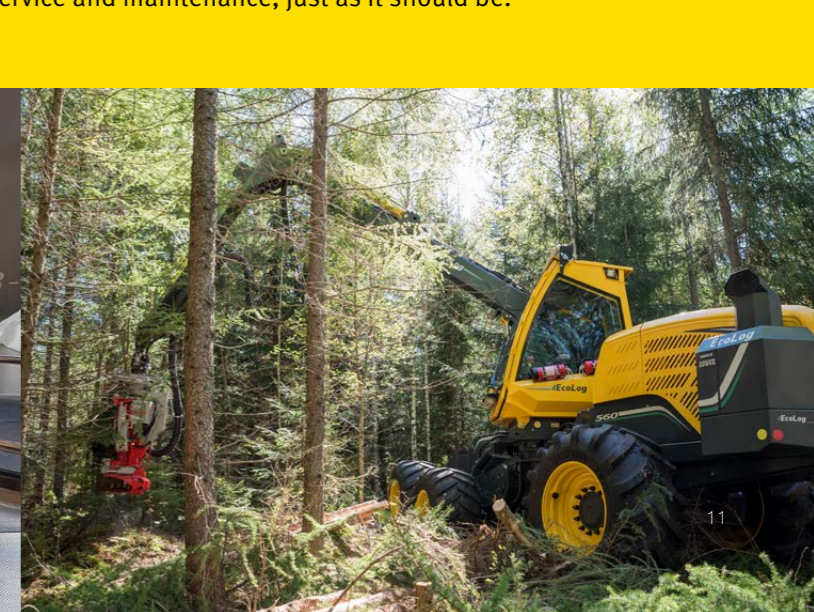
Our customers are in the following fields:

- Forestry machinery
- Public transport
- Transport and logistics
- Railway
- First responders
- M2M



Communication and collaboration

Malux has collaborated with vehicle installation companies around the Nordic regions for many years. The result is that our customers are always close to a helping hand for installation as well as service and maintenance, just as it should be.



Service and aftermarket



Training and services



Rules and regulations for ATEX

Malux are specialists in solutions for hazardous areas and can guide you through rules and regulations. We are proud to have the market's widest product portfolio in the business.

Service agreement for safer emergency lighting

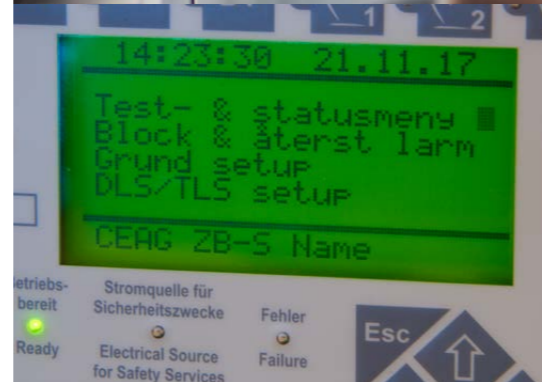
An emergency lighting system involves a considerable investment for a safer everyday life. It's a system that deserves its care.

By signing a service agreement with Malux, we make sure that the emergency lighting system is working properly and meets all regulatory requirements.

You will also be safe knowing that all inspections and checks are documented correctly - the easiest way to a hassle-free life.

Some of the elements included in the maintenance contract:

- Pre-inspection of the system
- Training on the basic functions of the system and regulations
- Complete inspection of the system
- Protocol and logbook
- Review of monthly check according to the checklist
- Priority service
- Phone support

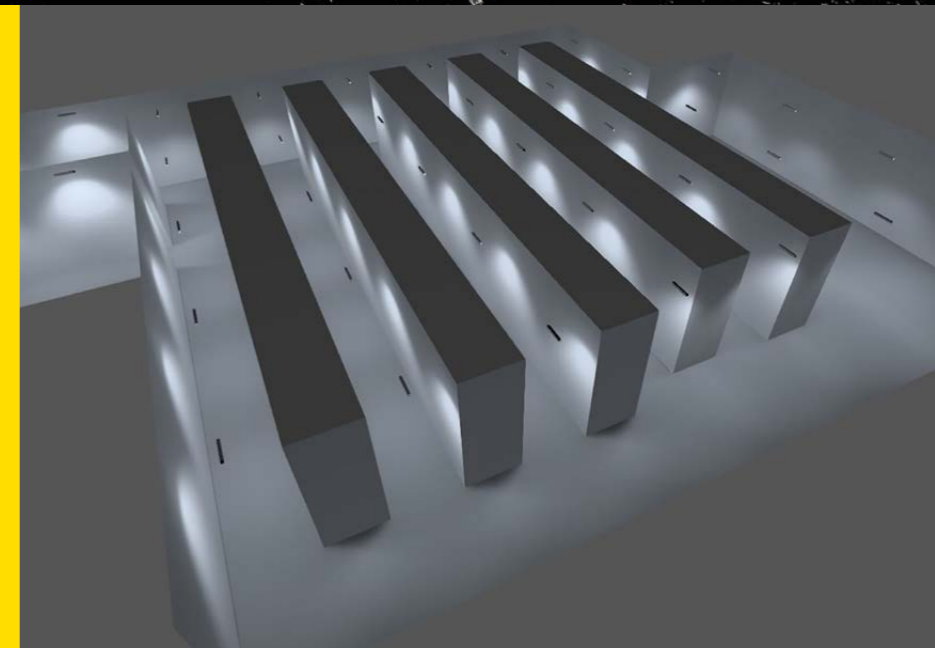


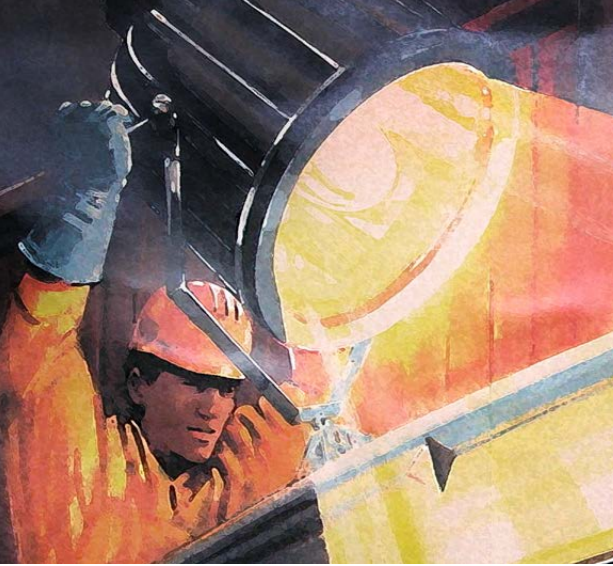
Training

- Antenna theory
- Driving and resting periods
- Emergency lighting standards

Services

- Project planning
- Lighting calculations
- Cloud-based services





Our history

Since the company started in 1972, we have worked towards creating a safer environment for our customers within industry, communication, lighting, service and aftermarket.



1961

The foundation of Malux was set through the start of El-Centralen, an electric installation company. Connections in West Germany and former DDR opened for import of electronics.

1972

El-Centralen is sold and Malux Elektro AB is established with focus on import and export of hazardous electric equipment, pneumatic tube system, under water lighting and tachometer generators. Jörgen Schulze starts working for Malux in 1977 and the affiliated company, Oy Scan-Malux is founded 1979.

80's

Jörgen Schulze buys Malux from his father in 1982 and invests in telecommunications technology through the purchase of Telemekano AB, Sweden's leading supplier of door phones. At the end of the 1980s, agreements were signed with ABB on the delivery of first-class Ex products. Branch offices in Stockholm and Gothenburg opens.

90's

Investment in computer technology through the formation of Malux Data AB with a focus on sales, service, complete computer system solutions and networks. Communications Department at Malux Elektro AB started after the agreement signed with Allgon which allows Malux to supply vehicle antennas in the Nordic region.

2000's

Malux Elektro AB and Telemekano AB are merged into the pure sales and distribution company Malux Sweden AB. Accenta AB is acquired to broaden the emergency lighting division. Malux sister company Flexeuropa AB is started after acquisition from Framfab AB.

2010's

Malux Data's business is acquired by the IT company ATEA. The Malux Group now focuses on the core business within Industry / Ex, Lighting and Communication. The communications department is growing, mainly through international business with TrainTalk TM.

Present

After many years of collaboration, Accenta's business is added to Malux Sweden AB. Accenta continues as a brand within the Malux group. Malux now has the market's widest range of emergency lighting. The communication department's revenue is growing through proprietary vehicle communication products.

The customers are our most important colleagues

An important goal for us at Malux is to manage the strong name and good reputation that we have on the market. Our products provide security for people and facilities and guarantees that we can stand for our motto; In safe hands with Malux.

To be able to maintain a constant high level of knowledge requires skill, primarily within the technical sector. It's also a matter of flexibility, down to earth working methods, to be able to reject good ideas to find the best.

A thesis we often apply to see if a theoretical solution works in practice, is to perform a "practical test". We invest extra time and energy to work with our customers to analyse requirements, to be able to find the best possible solution. This means that our customers never end up being one in the crowd, but that they are always considered to be an important part of what we do.

"Our knowledge and determination will give our customers the right products at the right time, and in the way the customers expects from a specialist company", this is the Malux quality objective.

We work according to ISO for quality management. As long as we continue to develop, seek new customized solutions and listen to what the market demands, we will always be a supplier to trust. That is a promise.



"As a customer of Malux, we will always take care of you"

Jörgen Schulze
Owner Malux Group

Technical solutions for a safer world

When it comes to safety there are no shortcuts. The choices are many and the supply of solutions are constantly growing. Our experts and sales representatives will help you find the right products, solutions and advise on regulatory requirements. Let us know if you have any questions.

www.malux.com



**HÖGA
KUSTEN**

THE HIGH COAST OF SWEDEN
Established 10,000 years ago

Malux in the heart of the High Coast

Malux is an entrepreneurial company with its headquarters in Örnsköldsvik, the heart of the High Coast area in Sweden. With great knowledge, quick deliveries and reliability, we create added value for our customers and partners.

Malux
solutions